



Blood Sensor Emitter

DDL2002

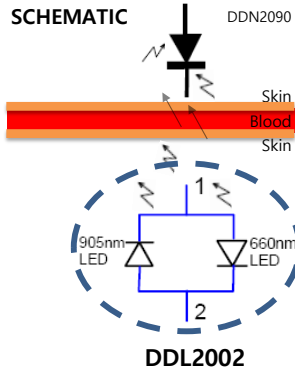
for High Reliability

FEATURES

Two Drive Line Dual LED Emitter
Dual Red and IR LED Matched to SPO2
Hermetic Chip on Board Package

APPLICATIONS

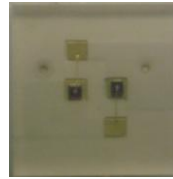
Transmissive (Reflective)
Blood Analysis
Medical Instrumentation
Radiometric Instrument
Oximeter Probes



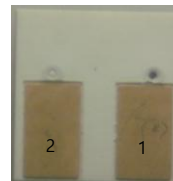
PACKAGE DIMENSION (mm)

w x h x t = 4.3x 4.5 x 1.3
PAD = 1.5 x 2.5

Top View



Bottom View



ABSOLUTE MAX. RATINGS (Ta=25°C unless otherwise noted)

SYMBOL	PARAMETER	MAX. RATED VALUE	UNITS
PD	Power Dissipation	120	mW
IF	Continuous Forward Current	50	mA
IFP	Peak Forward Current	100	mA
VR	Reverse Voltage	5	V
T stg	Storage Temp	-20 ~ +85	°C
T opr	Operating Temp	-20 ~ +80	°C
T sd	Soldering Temperature*1	240	°C

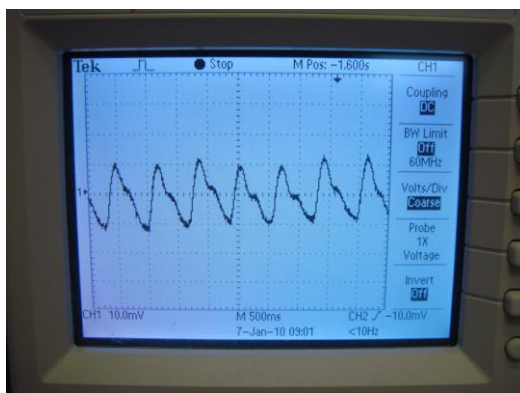
*Soldering time : t < 3s, **Moisture Sensivity Level 3

***Prebake 150°C 2HRs if Reflow Soldering

CHARACTERISTICS (Ta=25°C unless otherwise noted)

SYMBOL	CHARACTERISTIC	COMPONENTS	TEST CONDITION	MIN	TYP	MAX	UNITS
VF	Forward Voltage	LED1	IF=20mA		1.9	2.2	V
		LED2			1.3	1.5	
IR	Reverse Breakdown Current	LED1,LED2	VR=5V			10	uA
P O	Output Power	LED1	IF=20mA		1		mW
		LED2			2		
λ PEAK	Peak Wavelength	LED1	IF=20mA		660		nm
		LED2			905		
Δλ	Half Wave Width	LED1	IF=20mA		30		nm
		LED2			60		

PPG(Photo Plethysmogram) Characteristic DDL2002 with DDN2090



Packing Information



Anti Static vinyl bag

Label sticker