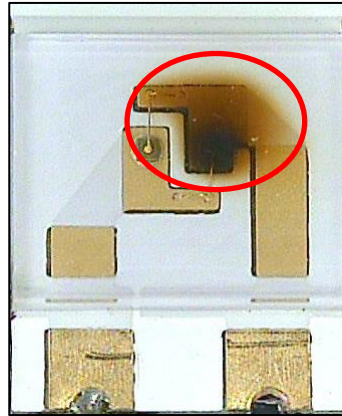
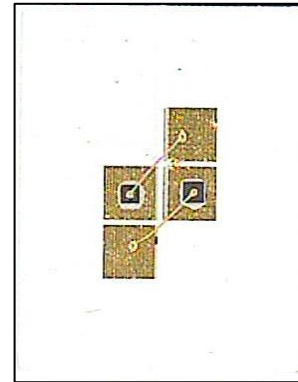


Heat Sink Test DDL2002H



DDL2002R



DDL2002H

DDL2002R was burnt out @160mA continuous drive 1day,
while DDL2002H was still OK.

DDL2002H has a heat sink to release heating when current drive LEDs.
Therefore LEDs can survive long time to be minimized degradation.

DDL2002H Back side
Internal heat sink
with soldering joint

